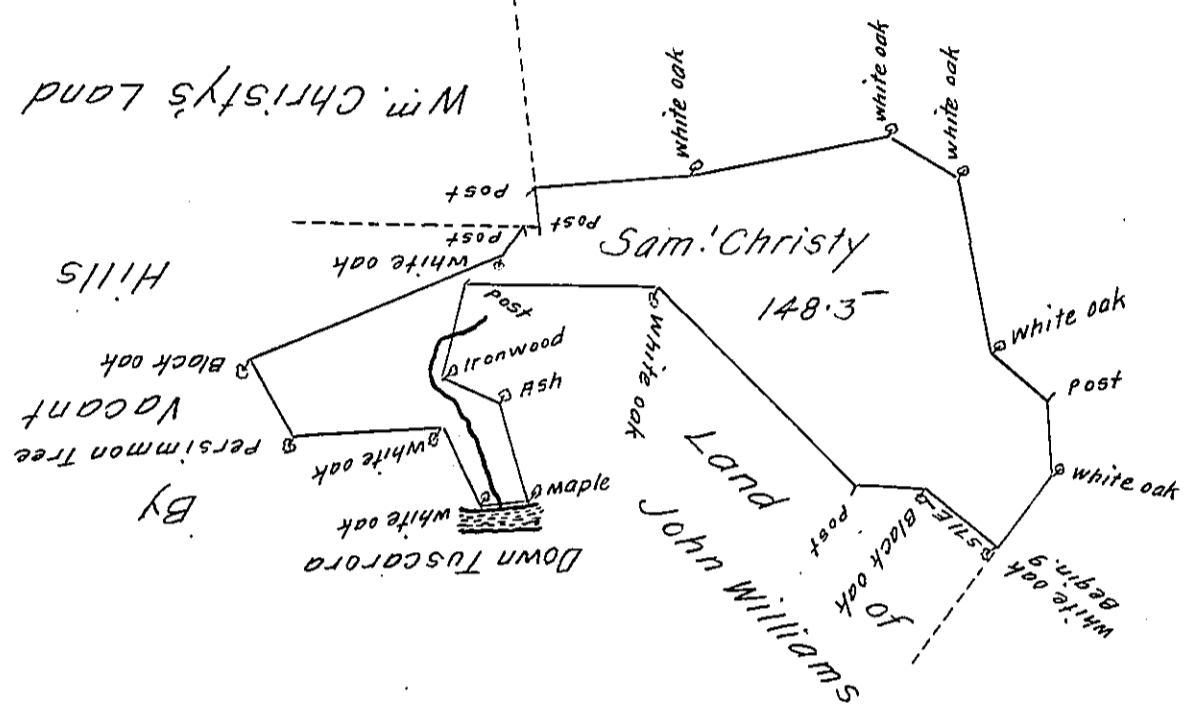


FORM No. 1.

Begin 9 white oak and by Land of  
 John Williams  
 S 71 E 40 to Black Oak by same  
 N 75 E 31 to Post and by same  
 S 65 E 121 to White Oak by same  
 N 72 E 82 to Post and by same  
 N 5 W 41 to Ironwood by same  
 N 84 W 26 to Ash and by same  
 N 36 W 44 maple on Tuscarora Creek  
 and Down the same  
 N 69 E 20 to White oak and by Hills  
 S 45 E 36 to White Oak and by same  
 N 68 E 77 to Persimmon Tree by same  
 S 50 E 36 to Black Oak by same  
 S 49 W 121 1/2 to White Oak by same  
 S 22 W 17 to ~~Post~~ Post and by  
 Land of William Christy  
 S 67 W 2 to Post and by same  
 S 24 E 15 to Post & by Mary Anderson  
 S 67 W 68 to White oak and by same  
 S 59 W 90 to White Oak and by same  
 N 80 W 33 to White oak and by same  
 N 31 W 77 to White oak and by same  
 N 66 W 31 to Post and by same  
 N 25 W 32 to White Oak and by same  
 N 6 E 34 to the Begin. 9



The Draught of a Tract of Land called— situate in Tuscarora  
 Valey Cumberland County containing One Hundred Forty  
 Eight Acres 65 Perches with the usual Allowance of six  
 Acres & Cent. for Roads. Survey'd the 28<sup>th</sup> day of April Anno  
 Dom. 1768 In Pursuance of an Order of Survey to Samuel  
 Christy Bearing Date at Philad<sup>a</sup> the 29<sup>th</sup> day of May Anno  
 Dom 1767 and numbered 3775.

W<sup>m</sup> Maclay D.S.

To John Lukens Esq. S.G.  
 of Pennsylvania

IN TESTIMONY that the above is a copy of the original remaining on file in  
 the Department of Internal Affairs of Pennsylvania, made  
 conformably to an Act of Assembly approved the 16th day of  
 February, 1833, I have hereunto set my Hand and caused  
 the Seal of said Department to be affixed at Harrisburg,  
 this seventh day of October 1910.

*Henry Houck*  
 Secretary of Internal Affairs.